

RA Series T1 3/4 Right Angle LED Bar* - RoHS Compliant

*Patented

Special Features

- Customized to your specifications without tooling charges
 - Variable LED spacing, minimum .280" maximum bar length 6"
 - Variable color sequence
- Available with 2 to 22 T1 3/4 LEDs in one convenient assembly
- Bar provides consistent LED alignment for multiple LED mounting
- Available with a variety of LEDs
- Wave solderable and chemically cleanable
- Housing and bar material UL 94V-0 rated

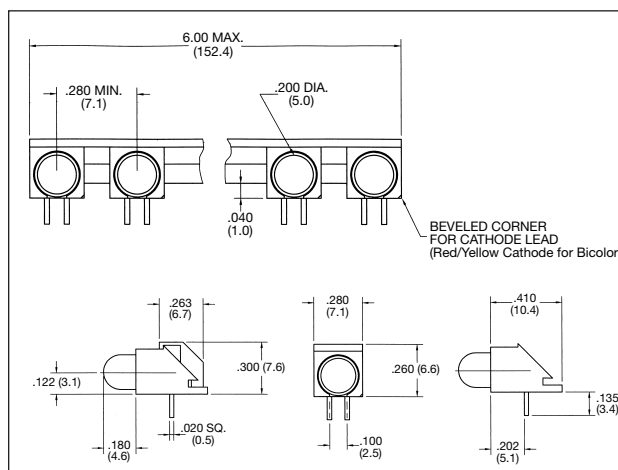


5mm PC Board Mount LEDs

Electrical and Optical Characteristics (T_A=25°C)

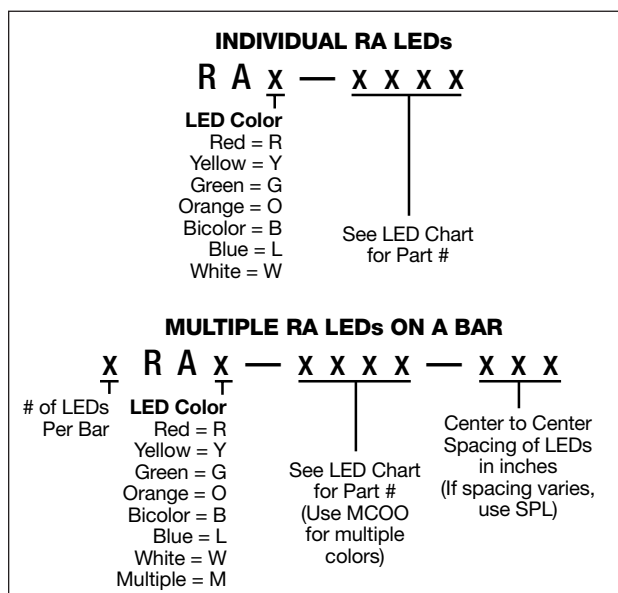
LED Part#	Color	Luminous Intensity (mcd) Typ.@I _F (mA)	V _F Typ.@I _F (mA)	Viewing Angle 2Θ 1/2	Peak Wavelength (nm)	More LED Data Page#
HIGH EFFICIENCY						
3008	Red	7.0	10	1.9	10	60° 635 24
3019	Green	14.0	10	2.1	10	60° 565 24
3020	Yellow	8.0	10	2.0	10	60° 583 24
3022	Orange	7.0	10	1.9	10	60° 600 24
LOW CURRENT						
3015	Red	2.3	2	1.8	2	50° 635 25
3016	Yellow	2.1	2	1.9	2	50° 583 25
3017	Green	2.3	2	1.8	2	50° 565 25
5V INTERNAL RESISTOR						
3040	Red	40.0	12	5.0	12	60° 625 26
3042	Yellow	16.0	12	5.0	12	60° 590 26
3043	Green	16.0	12	5.0	12	60° 565 26
BLUE						
3044	Blue	40.0	20	4.5	20	60° 430 30
3045	Blue	90.0	20	4.5	20	16° 430 30
BICOLOR						
9001	Red	30.0	20	2.0	20	60° 625 27
	Green	25.0	20	2.2	20	
9002	Yellow	15.0	20	2.1	20	60° 590 27
	Green	25.0	20	2.2	20	
ULTRA BRIGHT - DAYLIGHT READABLE						
3056	Red	500.0	20	1.9	20	60° 660 24
3055	Yellow	500.0	20	2.1	20	60° 595 24
3054	Green	300.0	20	3.5	20	60° 525 24
SUPER ULTRA BRIGHT						
3036	Red	2500.0	20	1.85	20	30° 660 29
3046	Red	900.0	20	1.9	20	30° 635 29
3047	Green	1750.0	20	3.5	20	30° 524 29
3048	Amber	1300.00	20	2.02	20	30° 592 29
WHITE						
3058	White	1198.0	20	3.65	20	20° N/A 30

Package Dimensions



All Dimensions are in inches (mm)

How To Order



WILBRECHT
ELECTRONICS, INC.

LED
DIVISION